



The original of this book is in
the Cornell University Library.

There are no known copyright restrictions in
the United States on the use of the text.

<http://www.archive.org/details/cu31924015357969>



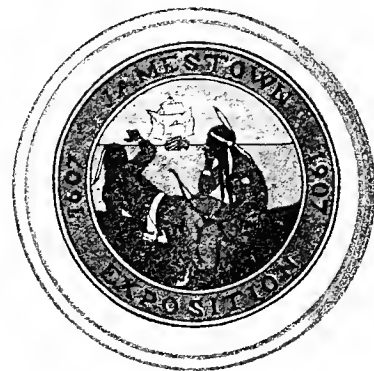
Cornell University Library
T 648.J23

The Jamestown exposition illustrated; pho



3 1924 015 357 969

*Illustrated Souvenir
of the
Jamestown Ter Centennial
Exposition*



Illustrated Souvenir

JAMESTOWN TER-CENTENNIAL EXPOSITION



Published by THE SEABOARD PUBLISHING COMPANY of Norfolk, Virginia

ROBERT A. REID, Manager

Copyright, 1907, by JAMESTOWN OFFICIAL PHOTOGRAPH CORP'N
All rights reserved

1907

L7

Press of ISAAC H. BLANCHARD COMPANY
New York

The Jamestown Ter-Centennial Exposition

On the shores of Hampton Roads, where the mighty James pours its waters into the broad Chesapeake Bay, with the Atlantic Ocean off in the distance between the Virginia capes, stands the great "Jamestown Exposition" where the people of our whole country are celebrating in fitting manner the three hundredth anniversary of the birth of the nation. Wonderful in its conception, beautiful in its execution, the "Colonial City" has arisen like magic among the Southern pines and flowers; and here Virginians, with true Virginia hospitality, are giving a hearty, gladsome welcome to all who come. With its buildings of brick, and the great white columns that marked the architecture of the Georgian period, the Exposition itself is a thing of beauty and a joy forever. But vieing with it in attractiveness is the wide expanse of the waters of Hampton Roads, where the battle-ships of the world have gathered in fraternal meeting. They do not look like dogs of war in their gay attire; covered with flags of many colors, and at night with myriads of lights, they tell the tale of peace and good will among all peoples. Beautiful women, and men of many nations, promenaded the decks, while the small boats ply between the ships as the officers, in bright uniforms, visit one another, and everywhere is heard the soft ripple of laughter and the voice of merriment. Truly the scene is wonderful, whether we look upon the land or upon the sea.

And the reason of its being adds to the interest of it all. Three hundred years ago, a hardy band of English adventurers passed over the waters of Hampton Roads, and up the broad Powhatan, as the Indians called it, to Jamestown, where they established the first permanent English settlement on the American Continent. Many were its early vicissitudes, but it was guided in its infancy by the strong hand of the brave and wonderfully resourceful Captain John Smith, while for its guardian angel, there was the beautiful and gracious Indian maiden—Pocahontas of happy memory. Of Jamestown, nothing now remains save the lonely ruins of the old church tower; but from that little settlement this great nation sprung, and it seems but right and proper that the world should come en masse to its birthday party, and share in the joys and festivities of the happy holiday.

From April 26th to November 30th, 1907, Virginia, "The mother of states and of statesmen" is "at home" in the Colonial City.

There is no other land so fair

As Old Virginia,

So full of song, so free from care

As Old Virginia,

And I am sure that happy land

The Lord prepared for mortal man,

Is built exactly on the plan

Of Old Virginia.



THE AUDITORIUM.

The Auditorium is the central and main building of the three structures forming the principal figure of the grand picture of the Exposition. It faces Raleigh Court, with an enchanting view of Hampton Roads and the naval ships in the distance, with the Grand Basin, the Piers and the Sunken Gardens near at hand. Its southern facade faces the beautiful Lee's Parade which is entirely surrounded by apple trees, making a charming view looking toward the main entrance. Adjoining the Auditorium on either side are the Palaces of Education and next these, on the west, is the fireproof Fine Arts Building, and on the east the Marine Exhibits Building.



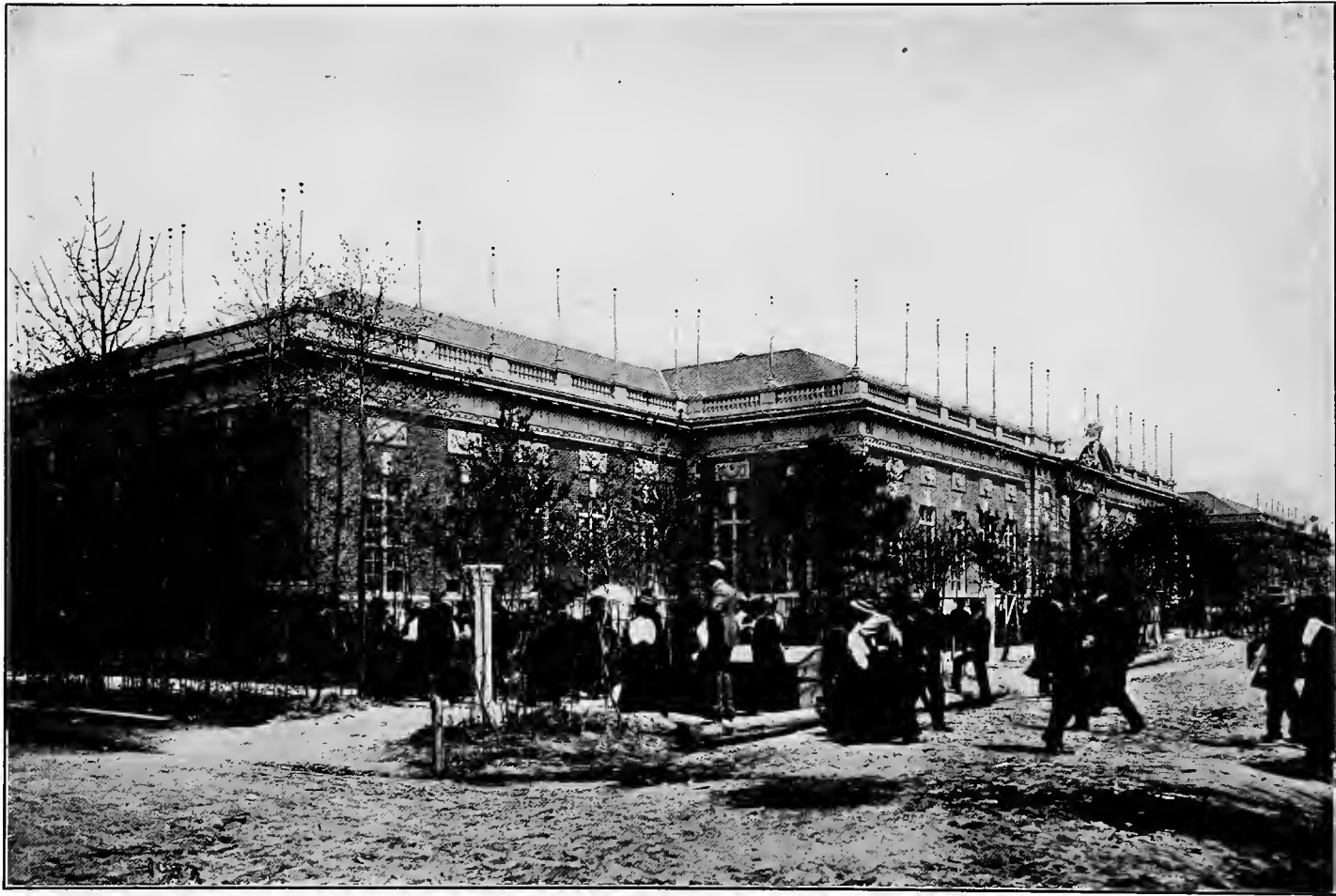
THE FOOD PRODUCTS BUILDING.

This ornate building devoted to the display of all kinds of food products is situated nearly opposite the War Path, on Commonwealth Avenue, and with one front facing Lee's Parade. Because of the great agitation of the subject of pure foods at the present time it is a place of unusual interest.



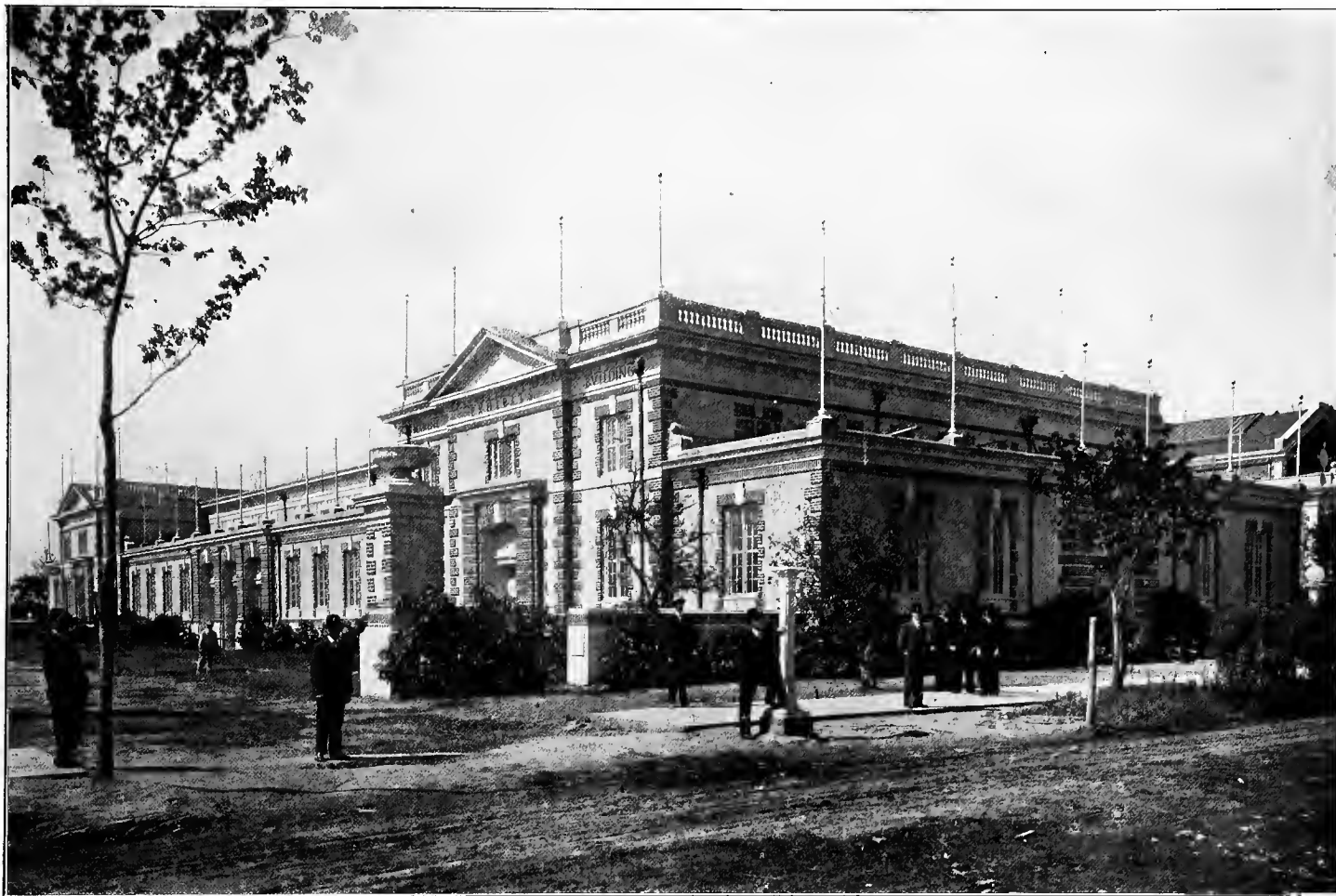
PALACES OF MACHINERY AND TRANSPORTATION.

The Palaces of Machinery and Transportation are connected buildings and stand at the right of the Auditorium and together measure 280x500 feet. Beneath the expansive roofs of these buildings there is displayed the modern and former methods of transportation, together with historical exhibits of great interest, and machinery in wonderful variety and for all kinds of purposes.



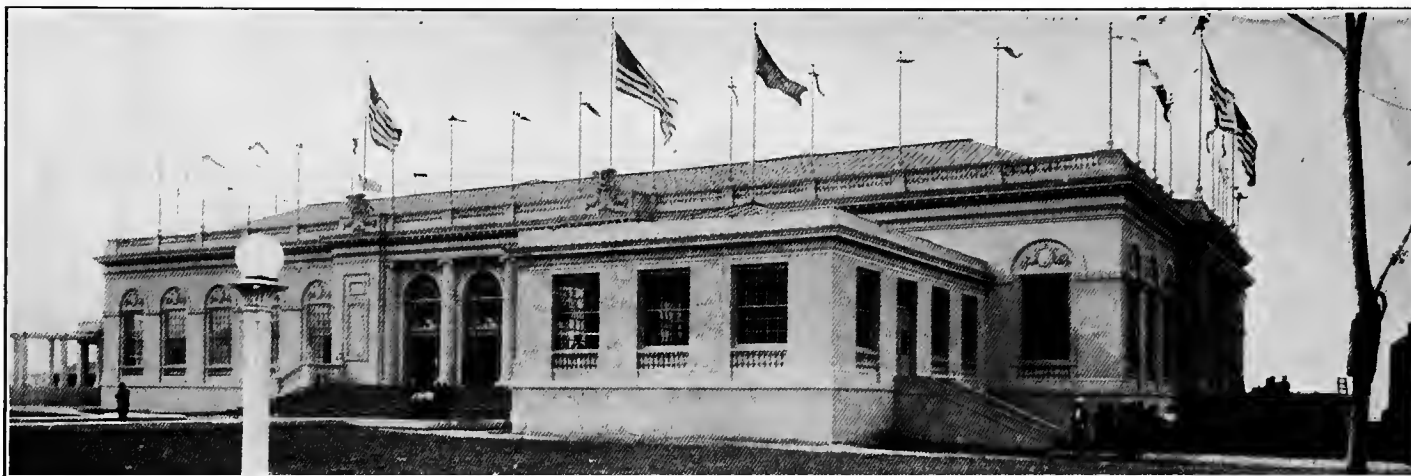
PALACE OF MANUFACTURES AND LIBERAL ARTS.

The Palaces of Manufactures and Liberal Arts extend from Raleigh Court, at the left of the Auditorium, to Commonwealth Avenue, and form corresponding units with Transportation and Machinery Palaces in the Grand Picture design of the Exposition. Filled with the productions of the world's famous manufactories, the aisles of Manufactures Palace are ever popular places of recreation and study.



MARINE EXHIBITS BUILDING.

This structure, so thoroughly in keeping with the Colonial architectural scheme of the Exposition, and so perfect a type, is situated between the Palaces of Mines and the East Educational Palace, and extends through from Pocahontas Street to Lee's Parade. Filled with all sorts of launches, yachts, and other classes of boats, and nautical appliances, it is of great interest to all who love the rivers, lakes and sea.

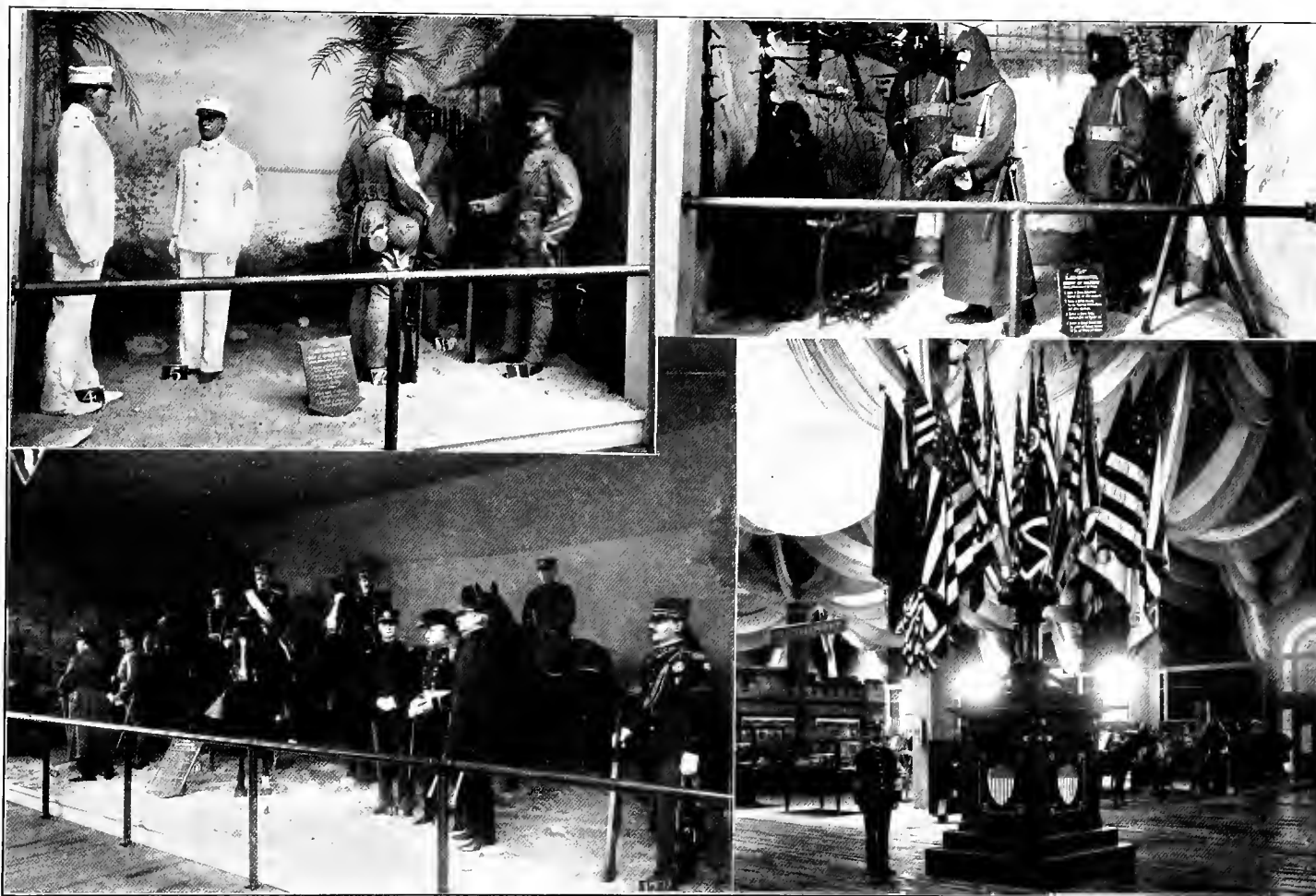


GOVERNMENT BUILDING, EAST. TREASURY, POST OFFICE AND INTERIOR DEPARTMENTS.



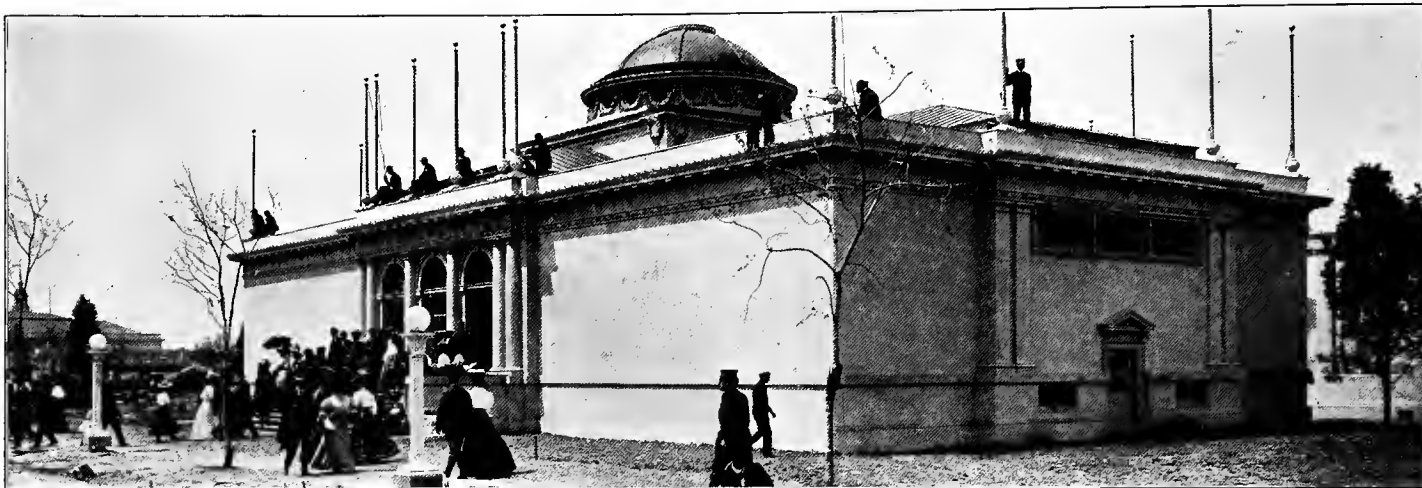
GOVERNMENT BUILDING, WEST. ARMY AND NAVY EXHIBITS.

The Government Buildings are always visited and their contents closely studied by the people who evince unflagging interest in the work performed by their own public servants.



VIEWS IN THE INTERIOR OF GOVERNMENT BUILDING, WEST.

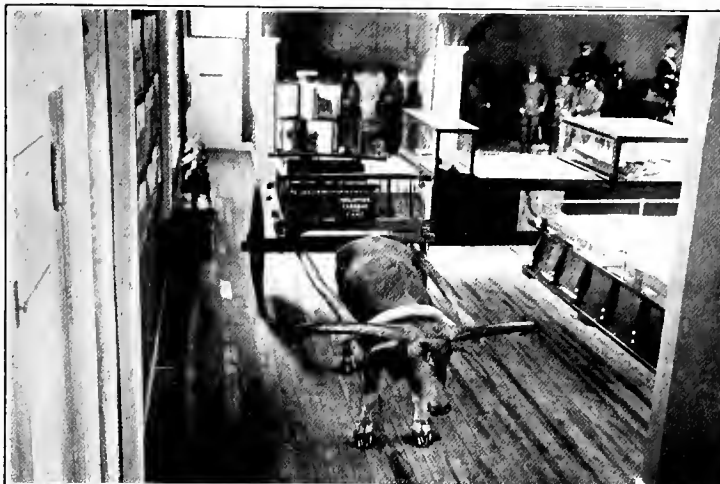
View No. 1 of this group shows the Philippine uniform adopted by our Government. No. 2 the Alaskan uniform, while No. 4 shows officers and other lines of service. They suggest the wide territorial influence to which our nation has attained in recent decades. No. 3 is a standard of flags adorning the center of this building.



FISHERIES BUILDING.



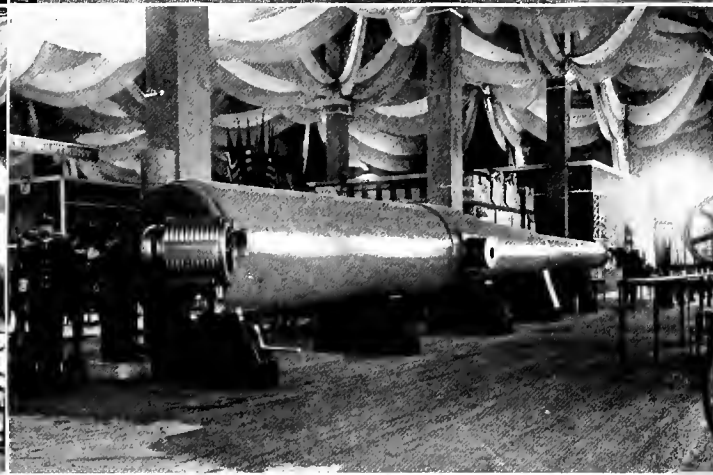
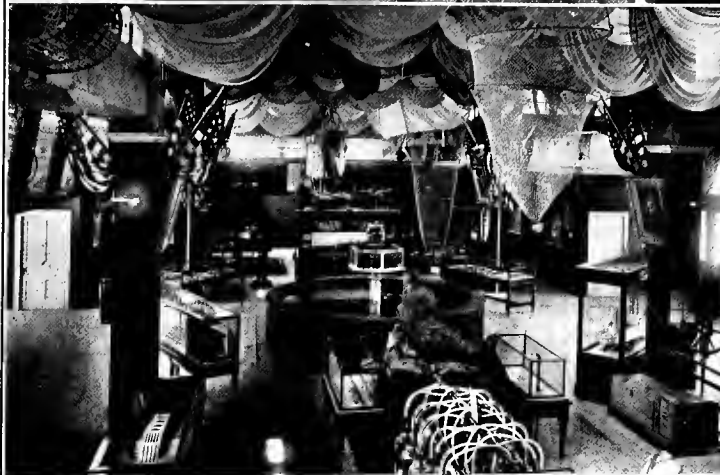
SECTIONAL VIEW OF THE STATES' EXHIBIT PALACE FROM SPOTSWOOD CIRCLE.



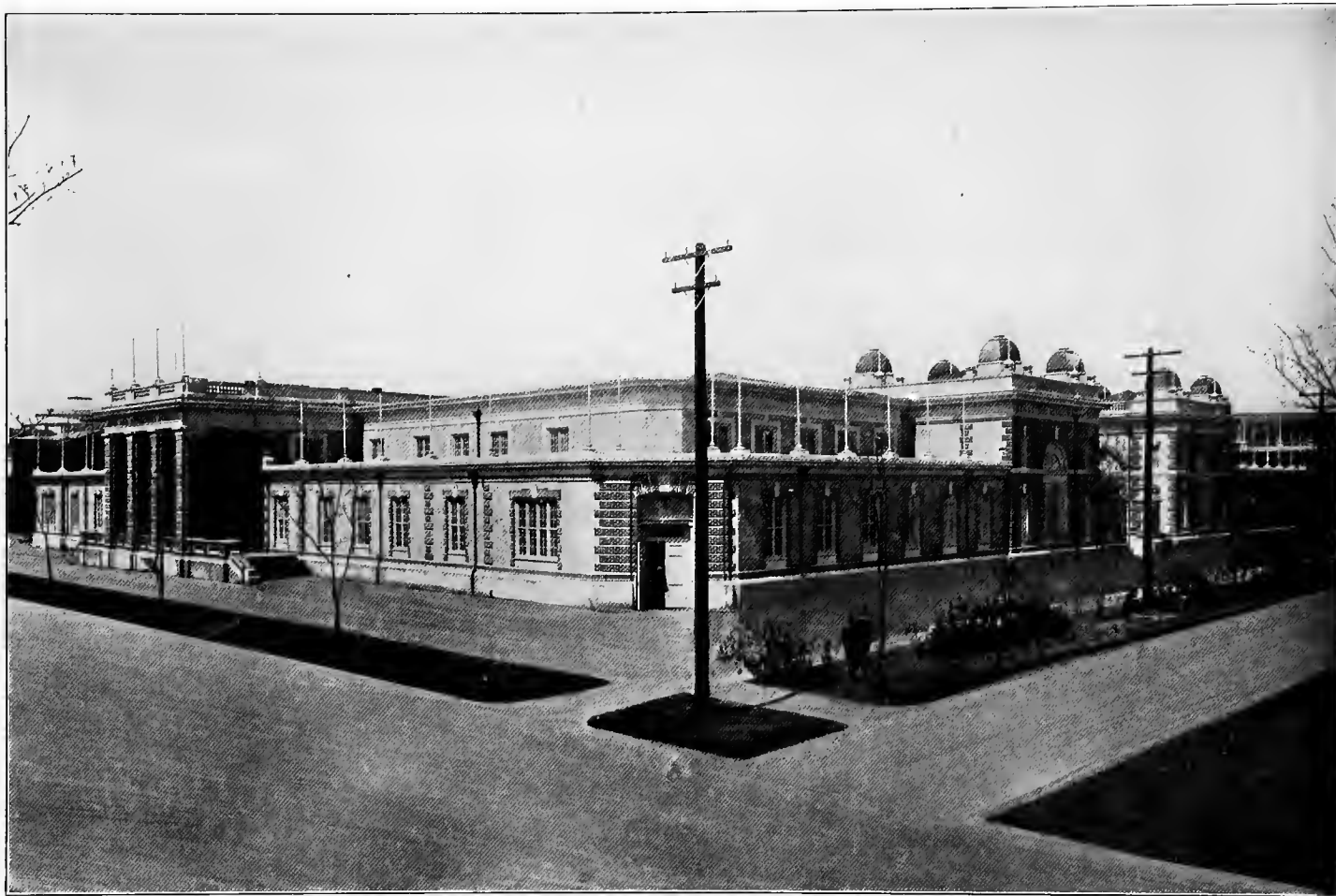
WATER BUFFALO FROM THE PHILIPPINES.
A VIEW IN THE FISHERIES BUILDING.



VIEW IN THE POST OFFICE DEPARTMENT.
GREAT GUN IN THE WAR EXHIBIT.



VIEWS IN THE GOVERNMENT BUILDINGS.



PALACES OF MINES AND METALLURGY.

The range of exhibits in the Palaces of Mines and Metallurgy includes specimens of the finest gems and the coarsest but none the less valuable output of the coal and iron and other mines, with the machinery used in their extraction and processes of treatment. A never ending source of interest is the wealth for which men delve in the depths of the earth.



STATE BUILDINGS ON WILLOUGHBY BOULEVARD.

The water front of the Exposition stretches for some miles along Hampton Roads, and this view shows a portion west of Government Pier and Raleigh Court. Along the board walk throngs are continually passing, visiting the State buildings and gazing out upon the waters.



THE STATES' EXHIBIT PALACE.

Within the confines of this vast building the visitor may spend hours with profit and pleasure in studying and comparing the products of various great States which compose our common country. The building, 300 by 500 feet, is at the right of Lee Parade as one enters at the Main Entrance.



MOTHERS' AND CHILDREN'S BUILDING---POCAHONTAS HOSPITAL.

Great Expositions like great cities must provide for the ills which are sure to overtake some unfortunates where great numbers of people congregate. Pocahontas Hospital is located at the east border of Lee's Parade, opposite the States' Exhibits Palace. The Mothers' and Children's Building, as its name implies, is a place of rest, facing Hampton Roads, on Willoughby Boulevard, near the Inside Inn.



VIRGINIA BUILDING.

Virginia has erected for the entertainment of her guests a typical old Virginia home of the Colonial period. It is beautifully located on Hampton Roads between the Pennsylvania and Maryland buildings, and true Virginia hospitality will be dispensed there during the Exposition.



AN INTERIOR VIEW IN VIRGINIA BUILDING.

The interior of the beautiful Virginia State Building is strikingly elegant and attractive, and perfectly in harmony with the intent to produce a good reproduction of the best class of early Virginia homes. Not the least interesting study to exposition visitors is that of the different styles pervading the State buildings and their furnishings. In all of these buildings are innumerable objects typical of peculiar qualities, clothed with tradition of historic reminiscence, or sacred because of associations.



PENNSYLVANIA



MASSACHUSETTS

STATE BUILDINGS.

The Pennsylvania State Building is a faithful reproduction of Independence Hall, the Nation's first Capitol, where the Liberty Bell hung, and now Philadelphia's, and, indeed, Pennsylvania's most revered historic building. The Massachusetts Building is a reproduction of the old State House in Boston. It stands at the head of State Street, the financial center of New England. The emblems of British authority, the lion and the unicorn, decorate the front of the building, as in the days of Colonial Government. Both State buildings stand on Willoughby Boulevard, one on each side and equidistant from Raleigh Court.



STATE BUILDINGS AND THE HEADQUARTERS OF THE DAUGHTERS OF THE CONFEDERACY



OHIO



ILLINOIS



MISSOURI

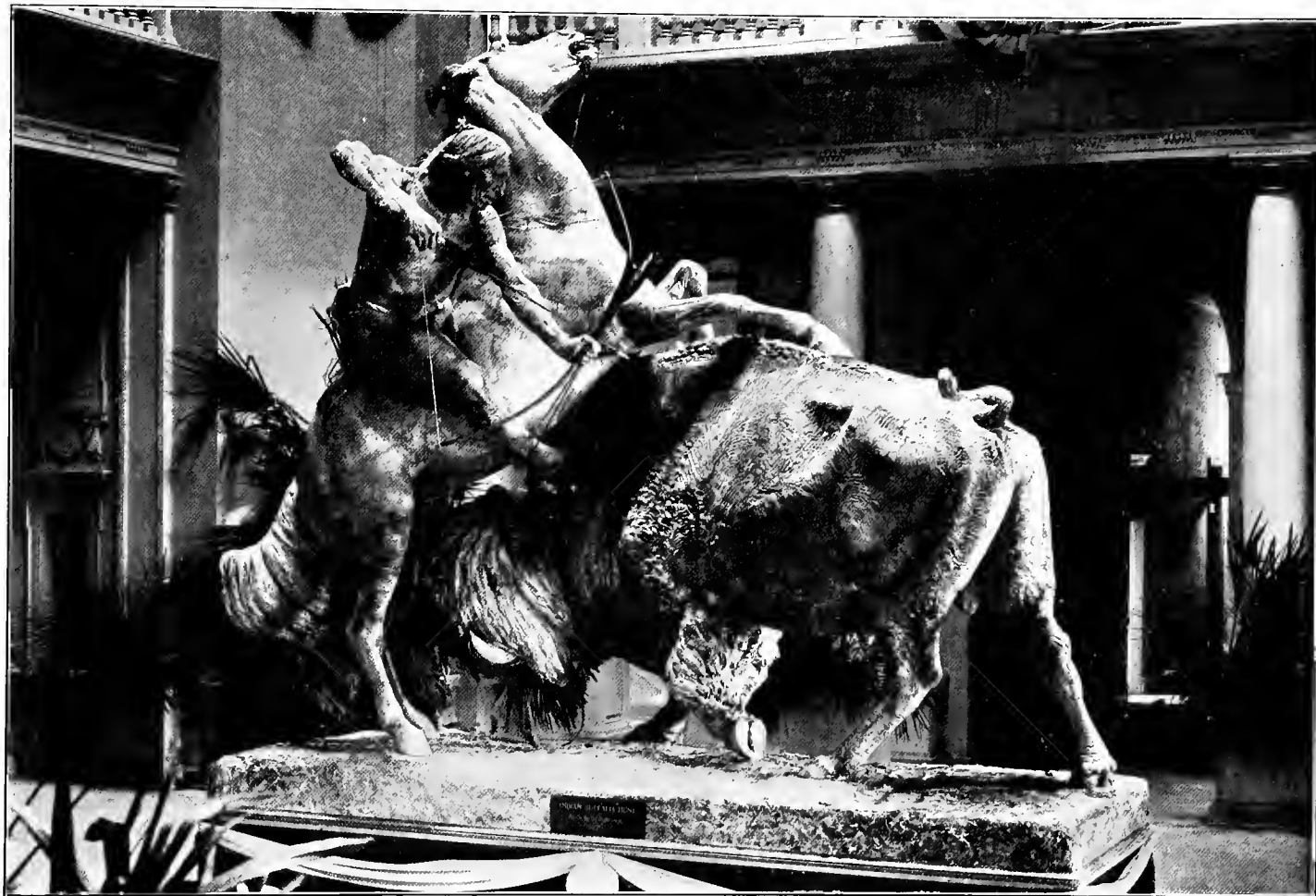


LOUISIANA

OHIO.
MISSOURI.

ILLINOIS.
LOUISIANA.

STATE BUILDINGS.



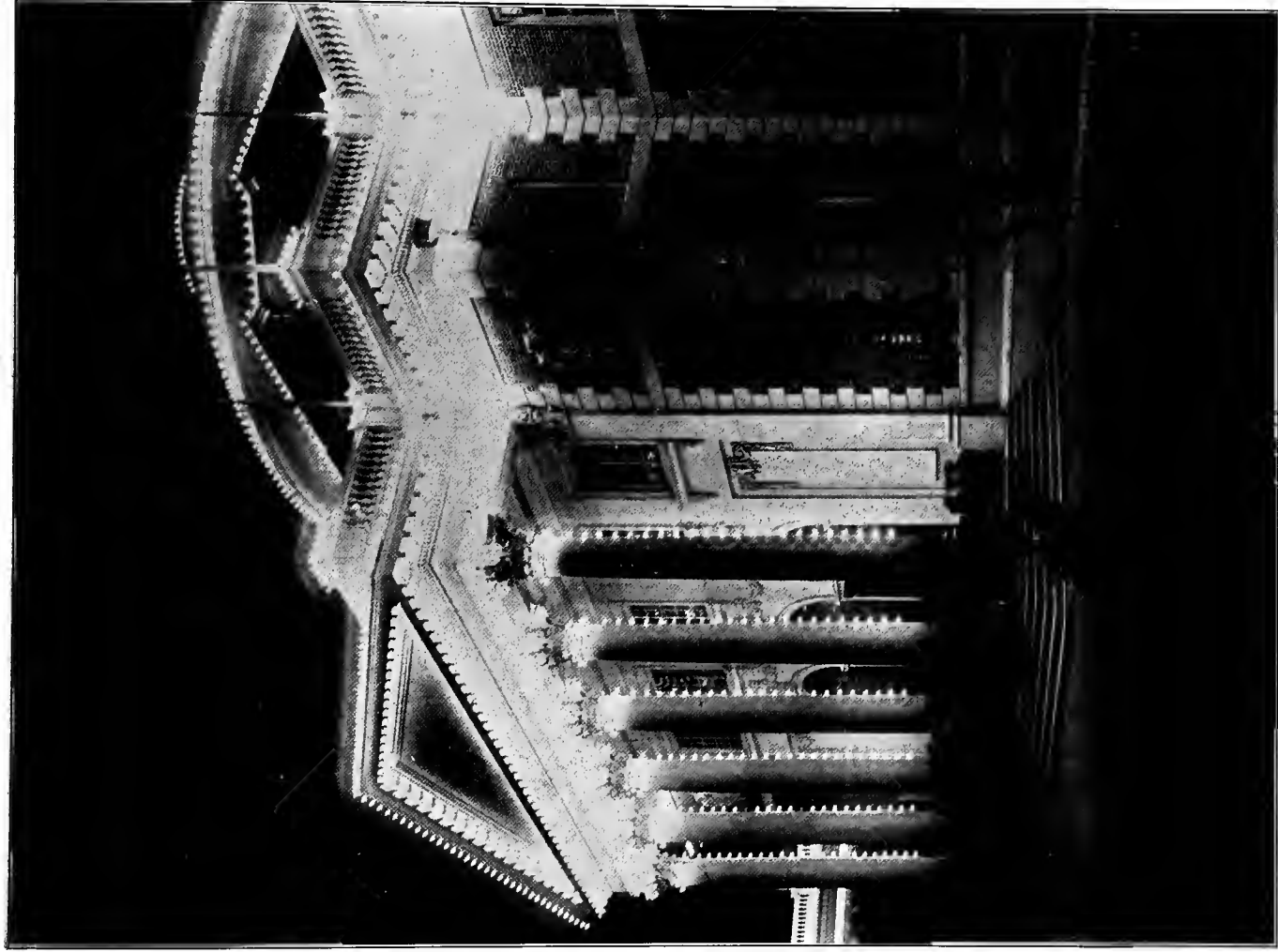
THE BUFFALO HUNT.

This spirited work of sculpture is the principal example of the art at the Exposition. It is within the walls of the Auditorium as one enters the Educational Palace, West, and is the object of great admiration. It was executed by Henry K. Bush-Brown, of Newburg, New York.



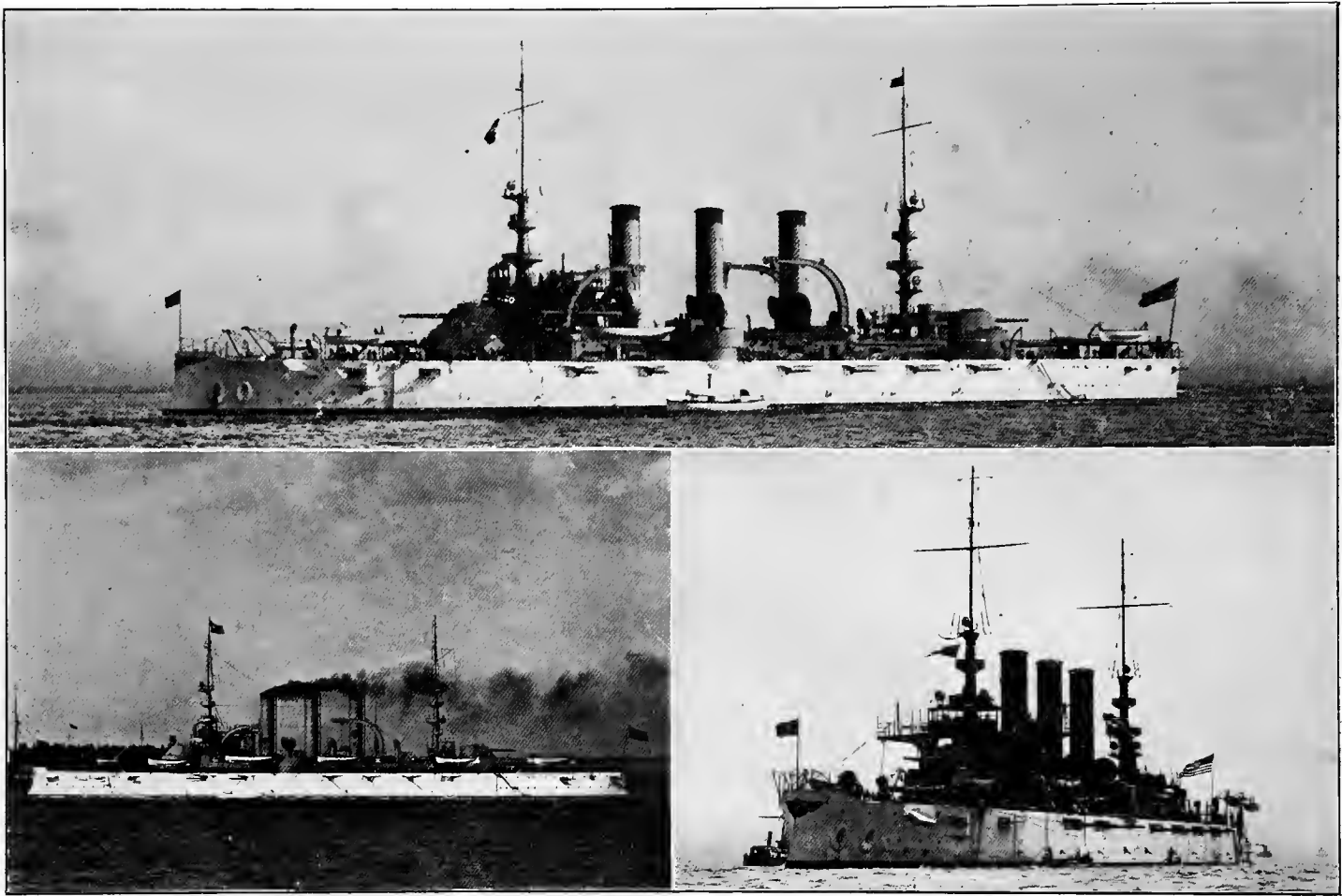
CAPTAIN JOHN SMITH TRADING WITH THE INDIANS.

This realistic group is in the Smithsonian Museum, one of the Government buildings. It illustrates methods prevailing in dealing with the red men, as well as the dress of the settlers. Near the group are others showing the dress of people of that date.



THE AUDITORIUM ILLUMINATED BY ELECTRICITY.

The Auditorium, occupying the central position of the Exposition, and having many hundreds of electric bulbs following its lines, makes a very striking picture at night. It is one of the principal units of a symmetrical whole, which, glowing with countless electric lights makes a scene of wonderful brilliancy and beauty whether seen from the Exposition grounds or from across the waters of Hampton Roads.

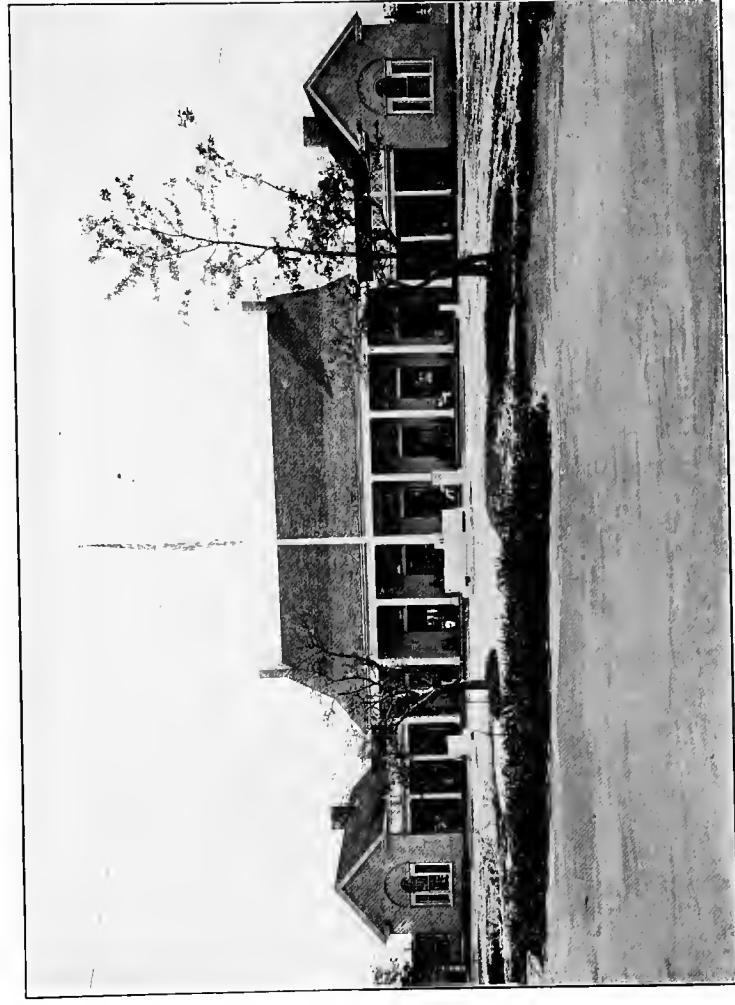


THREE UNITED STATES BATTLE-SHIPS.

These great battle-ships were photographed as they lay at anchor off the Exposition. The Virginia, pictured at top of the page, is one of the latest additions to our navy. She is a first-class battle-ship and was built at Newport News. The Georgia, a first-class battle-ship, is one of the fastest in the navy. She was built at Bath, Me. The Rhode Island is also one of the new first-class battle-ships, and was built at the Fore River Ship Yards, near Boston.



ARMY AND NAVY OFFICERS CLUB HOUSE.



SOLDIERS AND SAILORS CLUB HOUSE.



MILITARY PROCESSION ON LEE PARADE.



NAVAL FLEET ON HAMPTON ROADS OFF THE EXPOSITION.



CONVENTION HALL.

Convention Hall is just within the Main Entrance at the left as one faces Lee Parade. It is for the use of large assemblages of people and gatherings for which the Auditorium might prove inadequate.



CAPTAIN JOHN SMITH.

Capt. John Smith was one of the original colonists who landed at Jamestown, May 13, 1607. He was brave, fearless, and a man of wonderful energy and resource. In 1608, he was selected as President of the Council which governed the colony, and by his wise rule and great courage was able to preserve and protect the colony, which otherwise would doubtless have perished. Having been injured in an explosion he returned to England in October, 1609, and did not return to Virginia.

From Paintings in Virginia State Library



POCAHONTAS.

Pocahontas, sometimes called Matoaka, was the daughter of Powhatan, the most powerful of all the Indian chieftains. Through her aid and assistance the colony was several times saved from destruction. On one occasion, she threw herself between Capt. John Smith and the war clubs raised to beat out his brains. In 1616 she accompanied her husband, John Rolfe, to England, where she was received at court. She died at Gravesend the following year as she was about to return to Virginia.



THE NEW CHURCH AT JAMESTOWN ISLAND.

The new church at Jamestown Island, recently erected, is built upon the old foundations, and in the same relative position to the Old Town as the original church. On May 11, 1907, the National Society of Colonial Dames of America who raised the fund to rebuild it, presented the new edifice to the Association for the Preservation of Virginia Antiquities, and on the 13th of May, the three hundredth anniversary of the landing of the Colonists upon the Island, it was dedicated by the latter society in celebration of the historic event.



WALK ON POWHATAN STREET.

Showing Machinery and Transportation Palaces. About all of the Palaces are large rhododendrons and other flowering shrubs, adding brilliancy of green and brighter hues to the scene.



VIEW IN THE ARTS AND CRAFTS VILLAGE.

Arts and Crafts Village, consisting of seven old colonial buildings, house hand workers in textiles, iron, copper, wood, silver, rushes and felt. The artisans, or really artists, who work in these buildings produce Seventeenth Century household goods and wearing materials just as they were made by the earliest colonists.



BEAUTIFUL ORIENT.



TRIXIE AND PAUL REVERE'S RIDE.



INFANT INCUBATORS.



BATTLE OF MERRIMAC AND MONITOR.

WAR PATH ATTRACTIONS.

